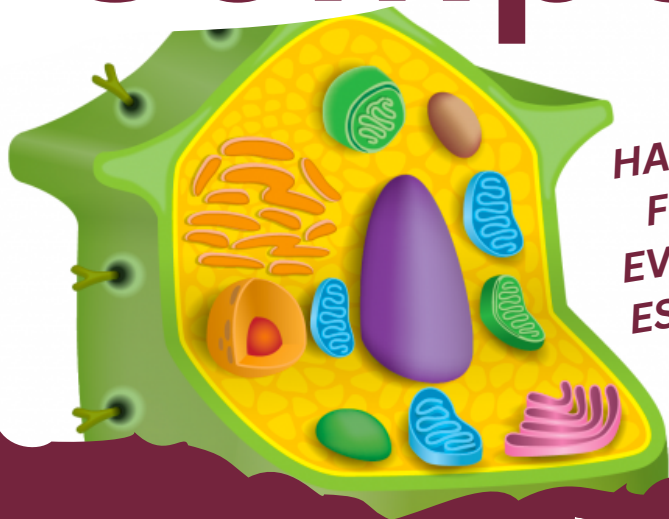


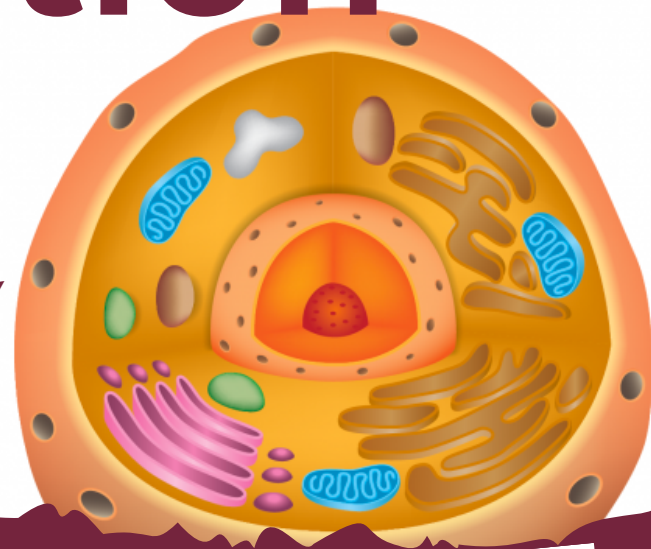
# Build a Cell Competition



CHESSINGTON  
SCHOOL



HALF TERM  
FUN FOR  
EVERYONE -  
ESPECIALLY  
YEAR 7!



**SIGN UP**

Sign up to take part  
and read the criteria



**BUILD A CELL**

Build an Animal or  
Plant cell in half term



**ENTER COMPETITION**

Enter your homemade cell  
into the competition

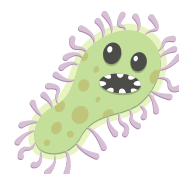
## HOUSE POINT REWARDS

**Positive points**

**20 points for taking part!**

**Bonus points**

**30 bonus points for the best model**



Easy competition! See the sign up sheets and criteria for how to take part.  
Get creative over half term. All cells will go on display in reception!

# Build a Cell Competition



CHESSINGTON  
SCHOOL

## Criteria

**Create a Plant/Animal/Bacteria/Virus Cell of your choice in model form -**

- It needs to be physically built (not computer based)
- Google "Model Animal / Plant cells" for ideas
- All Organs need to be labelled correctly
- Cell needs to stand out e.g. have colour, be different, be creative!

**Materials: you can use absolutely anything!**

- modelling clay, origami, sewing, woodwork, paint, smarties, icing, felt, sweets, cardboard, drawing, stickers, shoe laces, labels, plants, cake, play dough, lego, foam, straws, balls, plasticine, 3D etc.
- Don't forget to label every organelle so we know what is what!

**Enter the competition -**

- enter on the sign-up sheets and hand in with your model
- bring your model into school/science rooms after half term
- make sure you add your name and tutor group to the model
- await the judge's decision!

**WIN POINTS FOR YOUR HOUSE**





# Build a Cell Competition



**Sign Up**

Name: \_\_\_\_\_

Tutor group: \_\_\_\_\_

House: \_\_\_\_\_

Q1: Tell us about the cell you have made.

.....

.....

.....

.....

Q2: Did you create it yourself, with someone or in a group?

.....

.....

Q3: Is there anything else you would like the judges to know?

.....

.....

